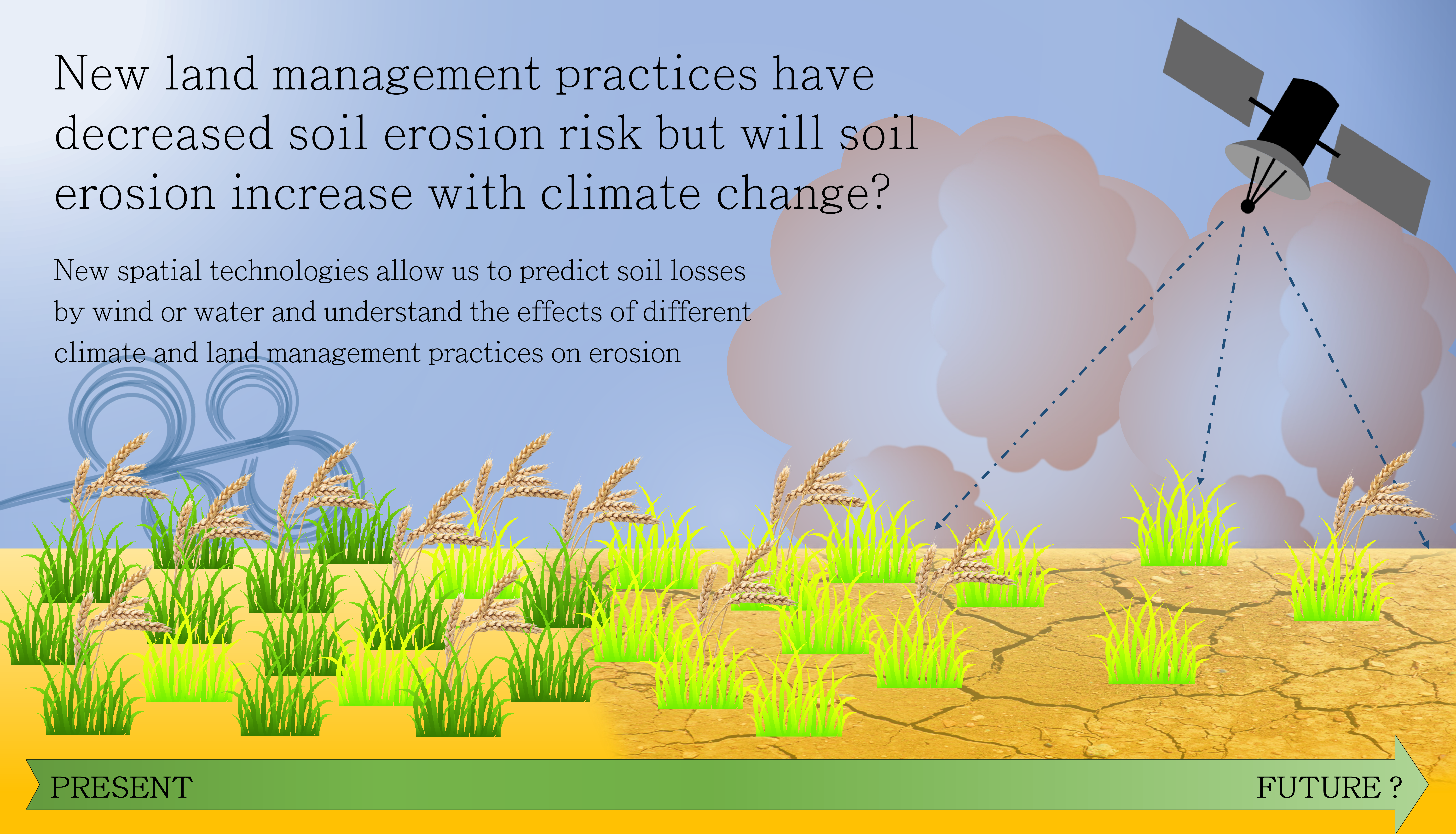


# New land management practices have decreased soil erosion risk but will soil erosion increase with climate change?

New spatial technologies allow us to predict soil losses by wind or water and understand the effects of different climate and land management practices on erosion



PRESENT

FUTURE ?

- Aims:
- 👉 Develop models to enable the identification of new erosion hotspots
  - 👉 Use modelled outputs to improve erosion mitigation policies