

# ADELAIDE FESTIVAL – WRITERS WEEK

SABE *ARM*



“Writer’s Week, first produced in 1960, became the model for subsequent literary festivals around the world, and its prestige and popularity among writers, readers and publishers has never been surpassed.”



# site

# SABE *ARM*



Various venues scattered around the Torrens Parade Ground, framed by King William Rd, Victoria Dr, Kintore Ave and Government House.



# audience

SABE *ARM*



On average a more mature audience. Fluctuating crowd sizes, depending on program but also the weather (peak summer). Shade is sought after.



# issues: identity / shading

SABE *ARM*



Appearance - interchangeable with other public events.

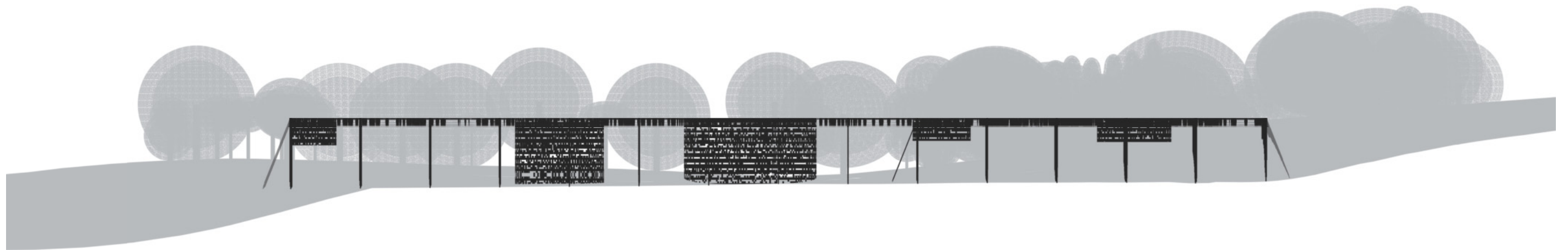


Lack of shading - reduces the amount of patrons during hot spells.



# approach - one datum / roof

SABE *ARM*

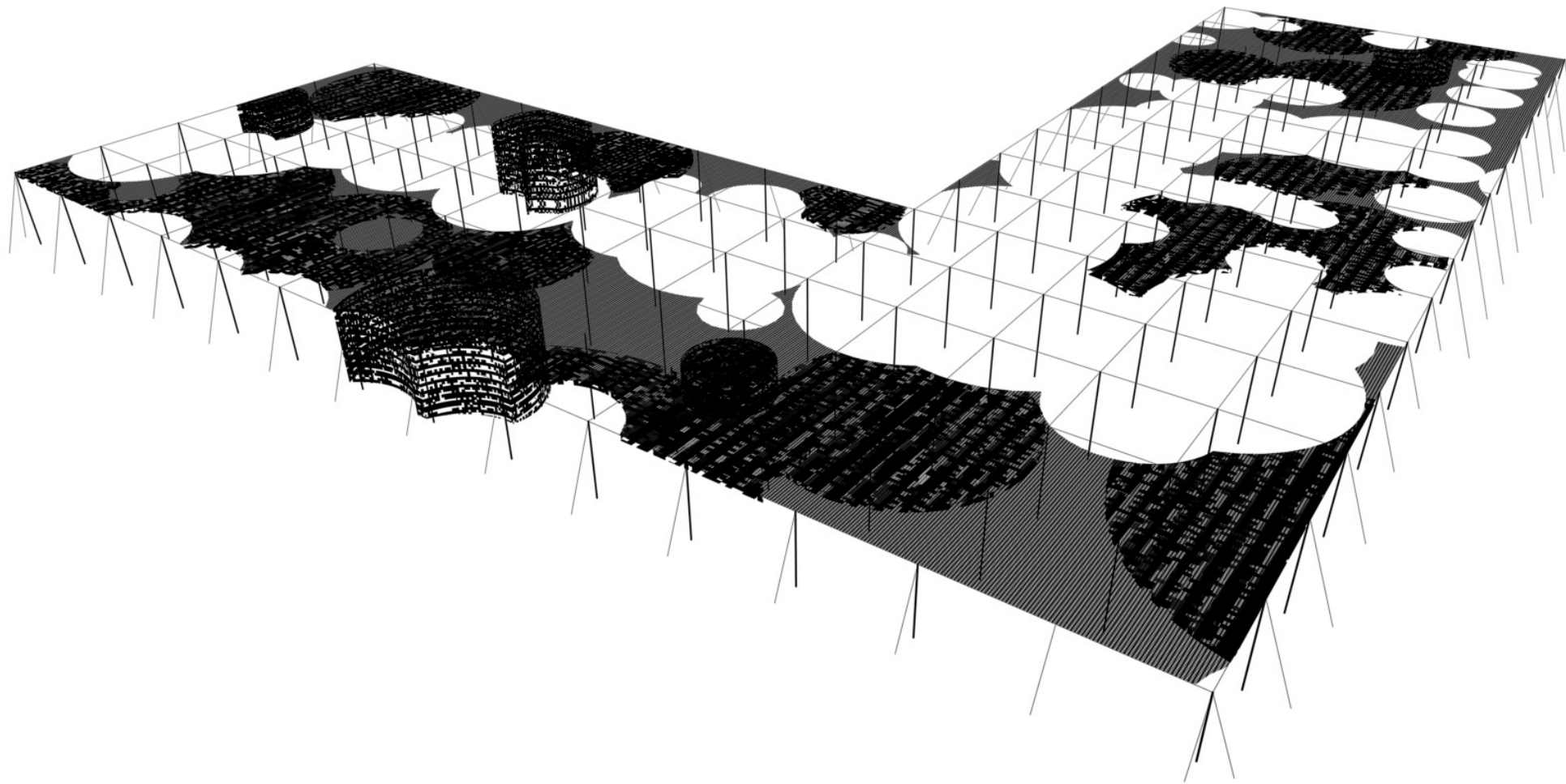


- modular post and cable grid
- base shading veil
- accentuated shading
- space defining follies



# approach - one datum / roof

SABE *ARM*

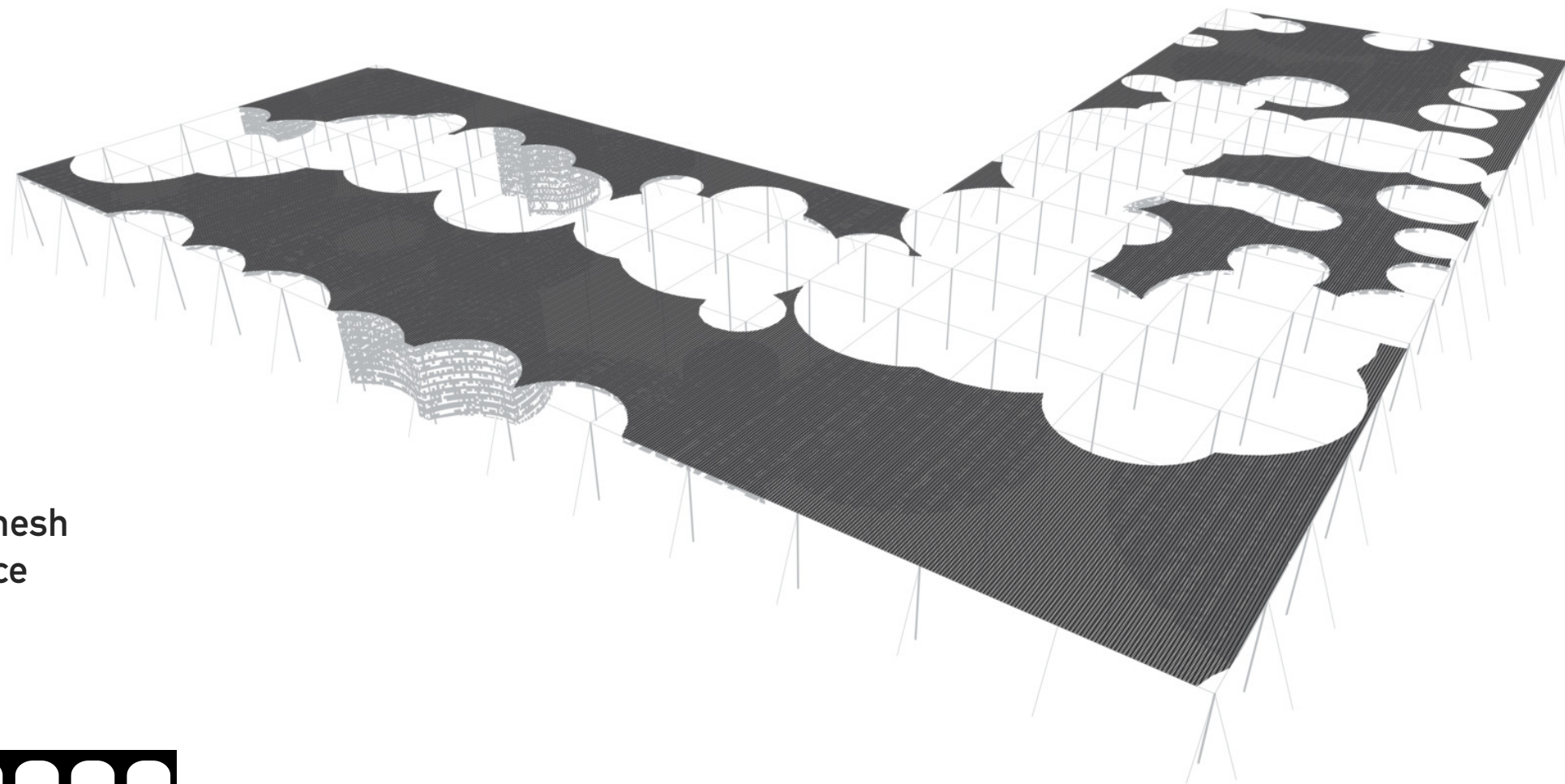


- modular post and cable grid
- base shading veil
- accentuated shading
- space defining follies

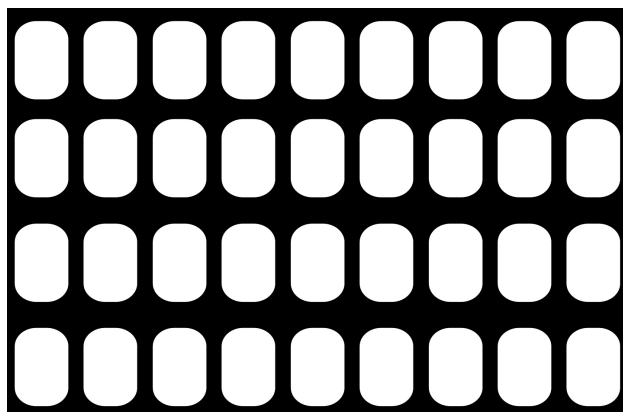


# shading - base veil

SABE *ARM*



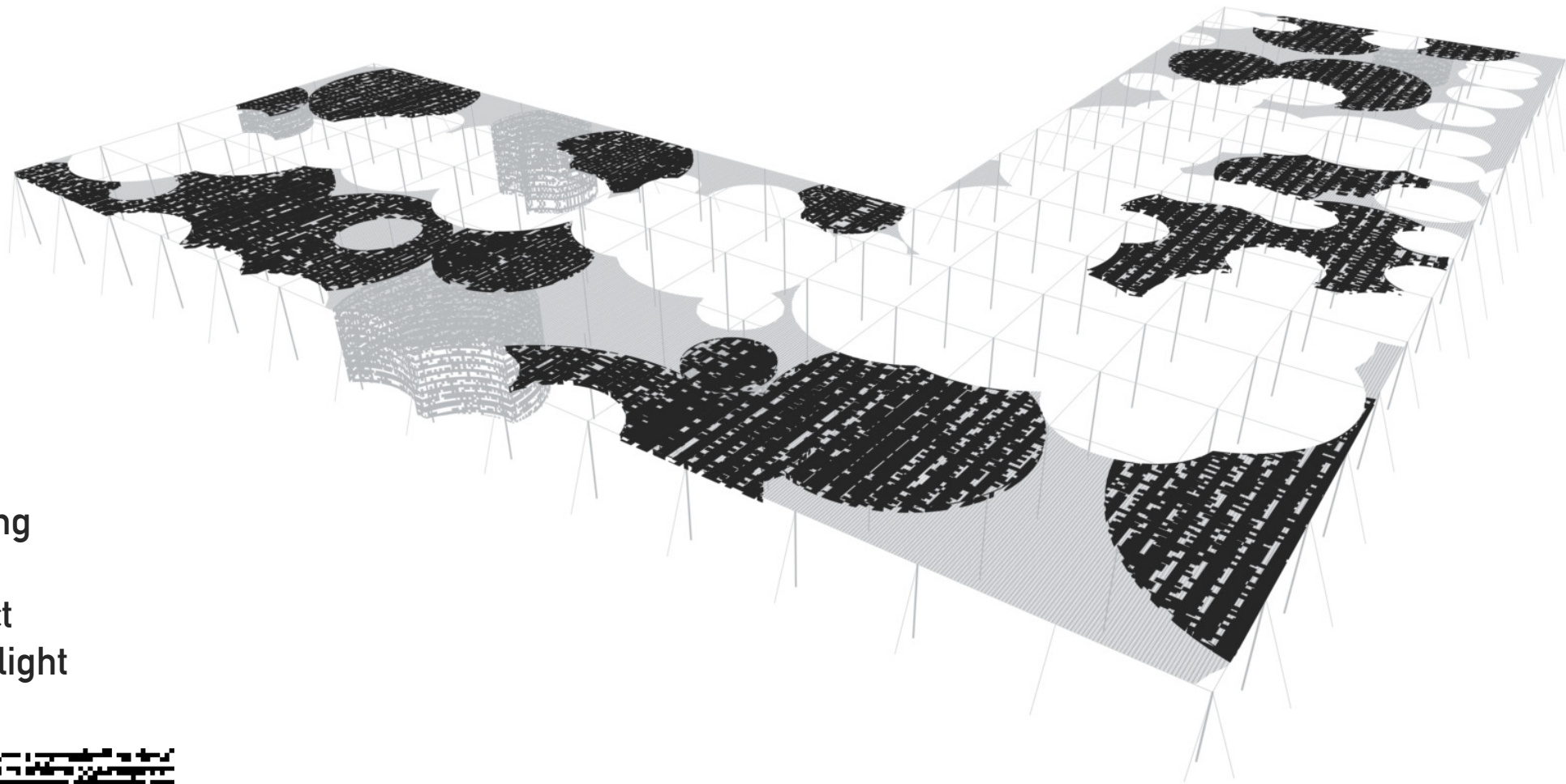
- tensile polyester mesh
- base shading device
- support





# shading - focused 2nd veil

SABE *ARM*



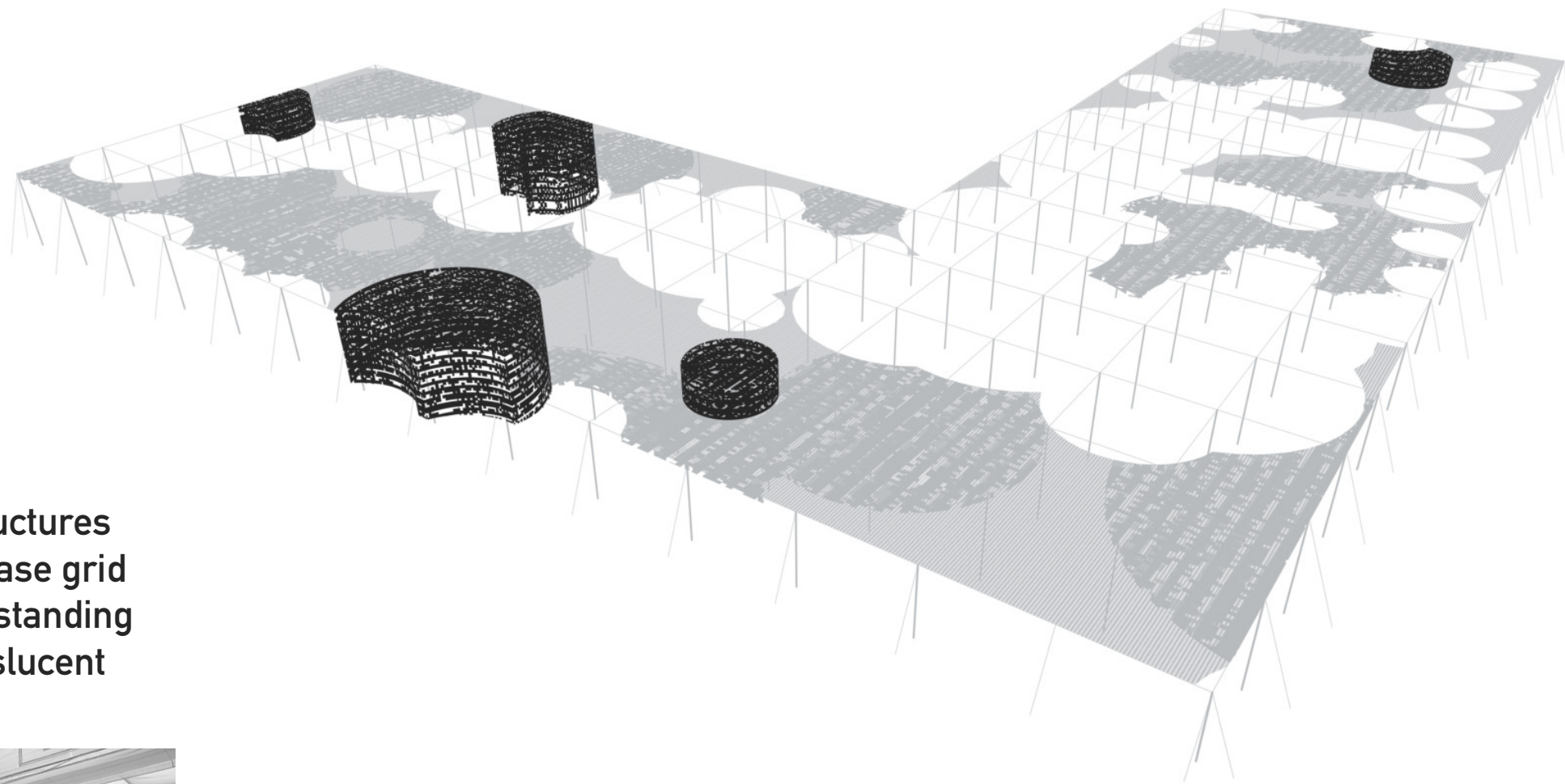
- accentuated shading
- potentially themed
- figurative / abstract
- dappled shading / light



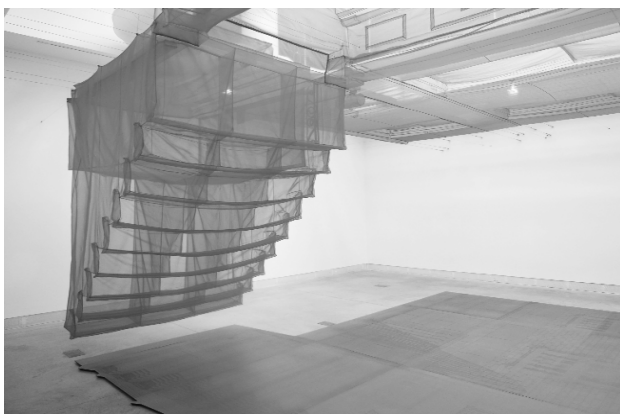


# venues – stages, catering, books

SABE *ARM*



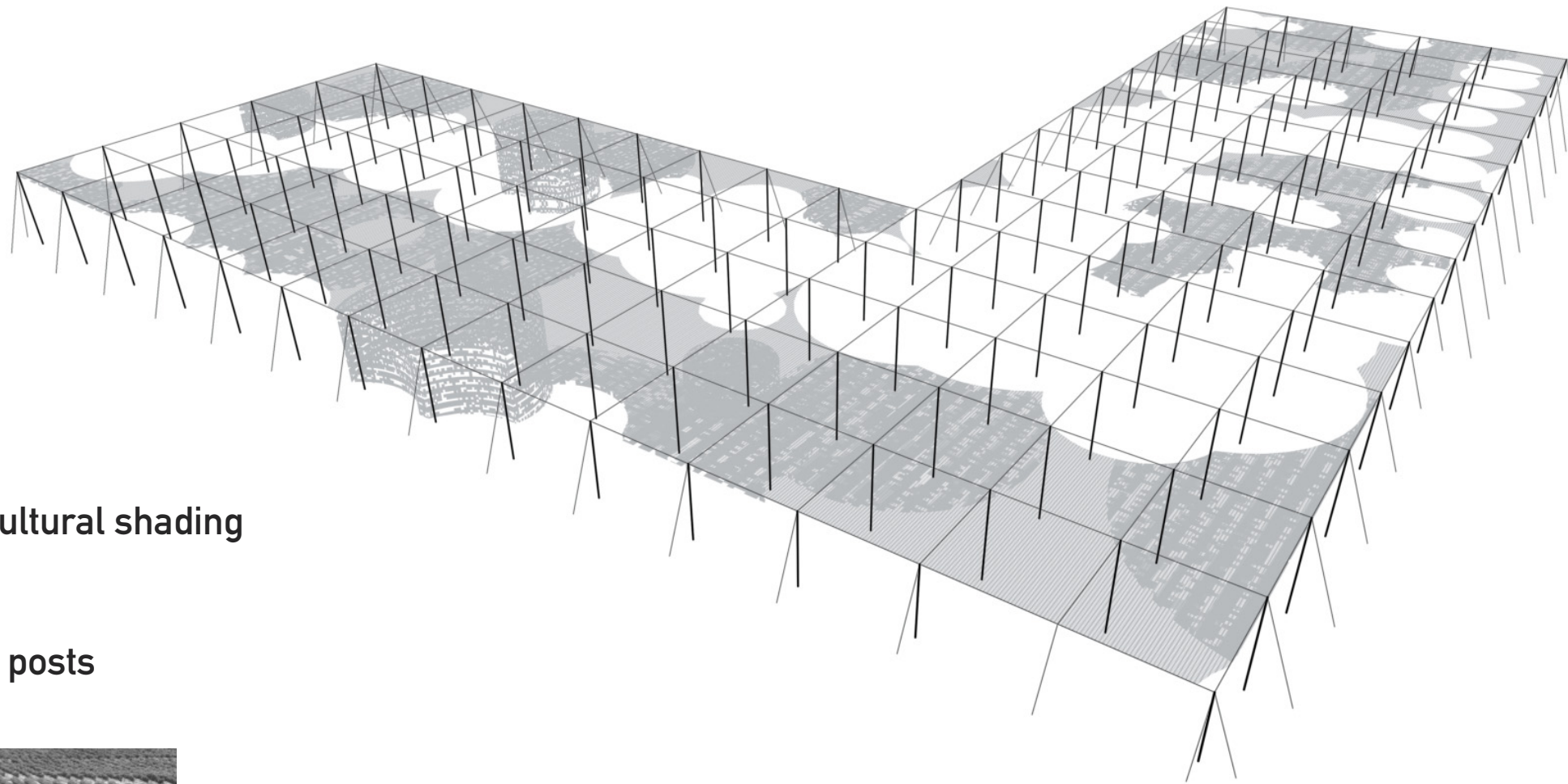
- space defining structures
- suspended from base grid
- possibly also free standing
- transparent / translucent





# structure - posts and cables

SABE *ARM*



- analogous to agricultural shading
- 10 x 10m grid
- post height 6-8m
- 100mm aluminum posts

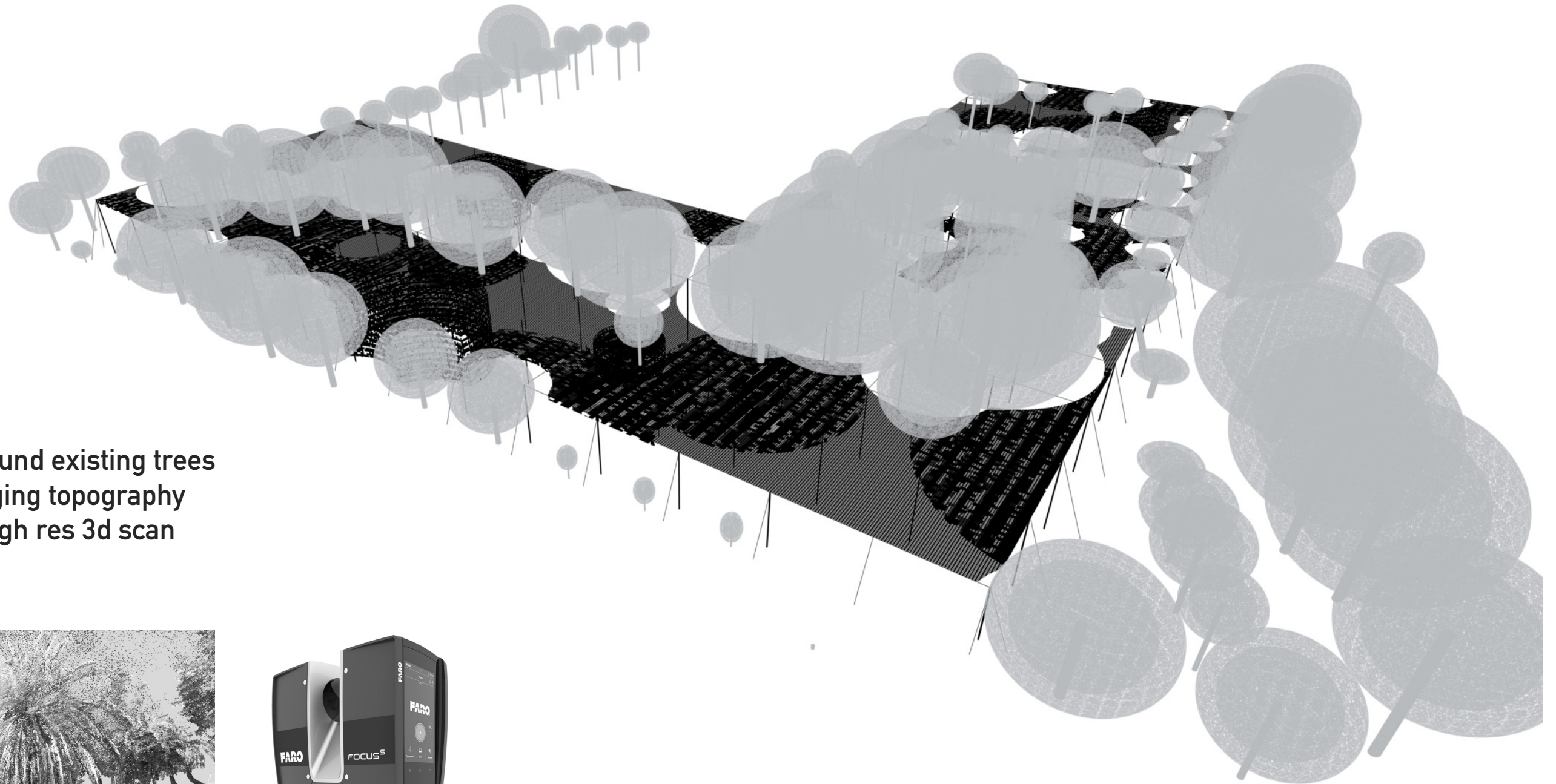




# site - contextual

SABE *ARM*

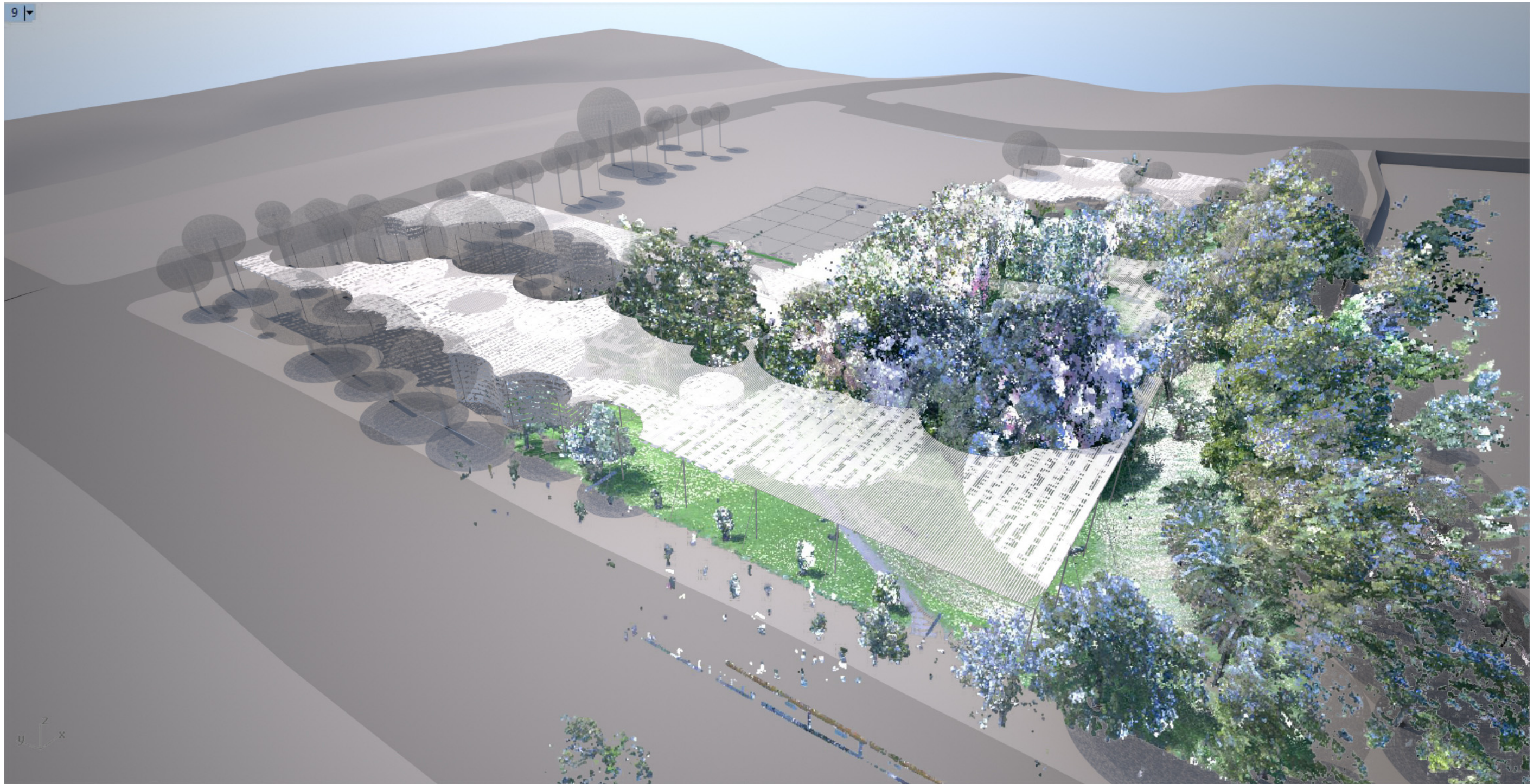
- tailored around existing trees
- acknowledging topography
- based on high res 3d scan





# views - south west: birds eye

SABE *ARM*

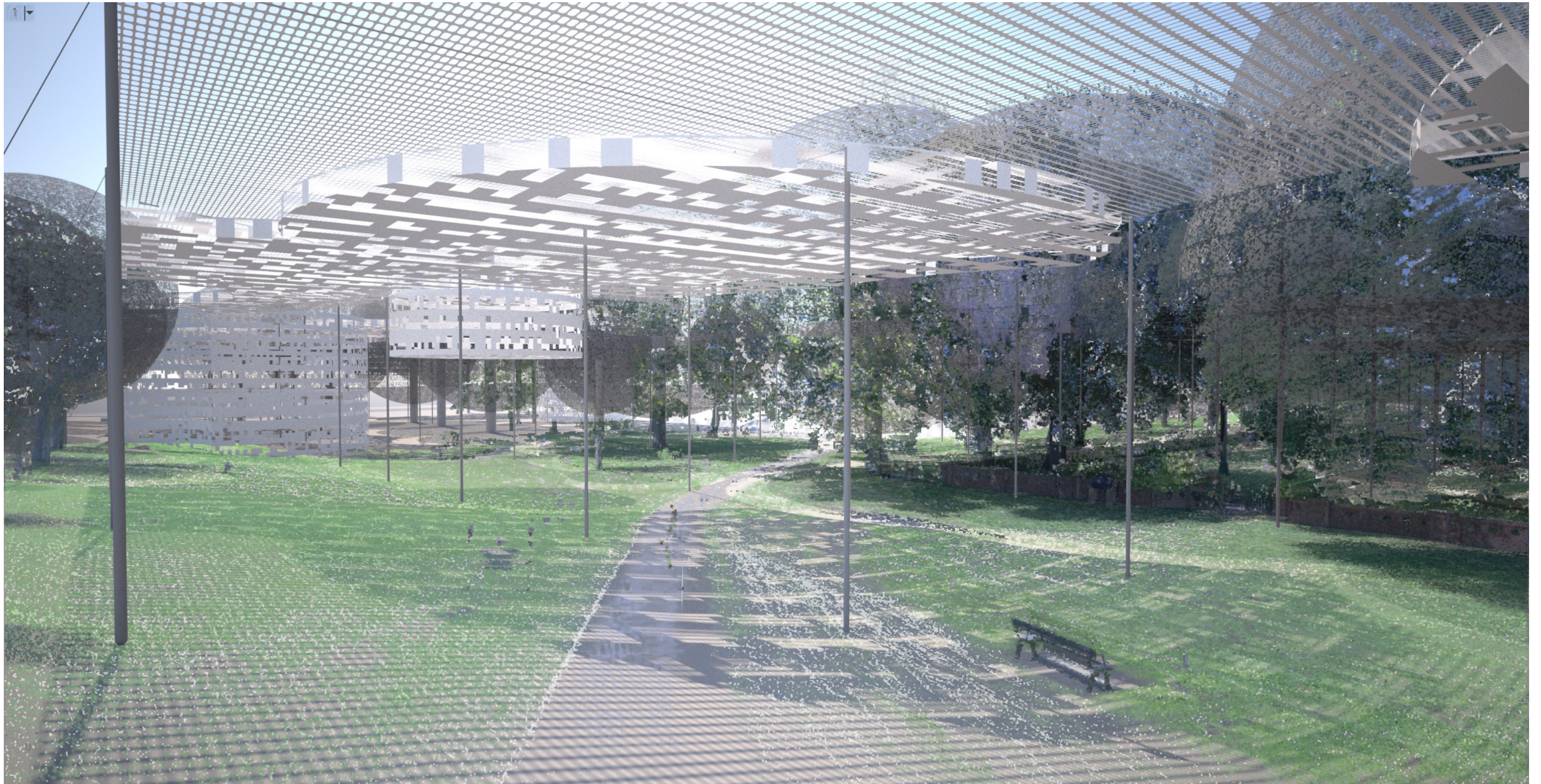


Sheltering multiple events under one roof, creating identity and signaling  
Writes Week beyond the immediate surrounds.



# views - south west: entry level

SABE *ARM*



Signify the event and directing the audience.



# venues – book and catering tents

SABE *ARM*



suspended or erected



# venues – pioneer womens garden

SABE *ARM*



The base grid allows to be filled with different degrees of shading.



# venues – south eastern stage

SABE *ARM*

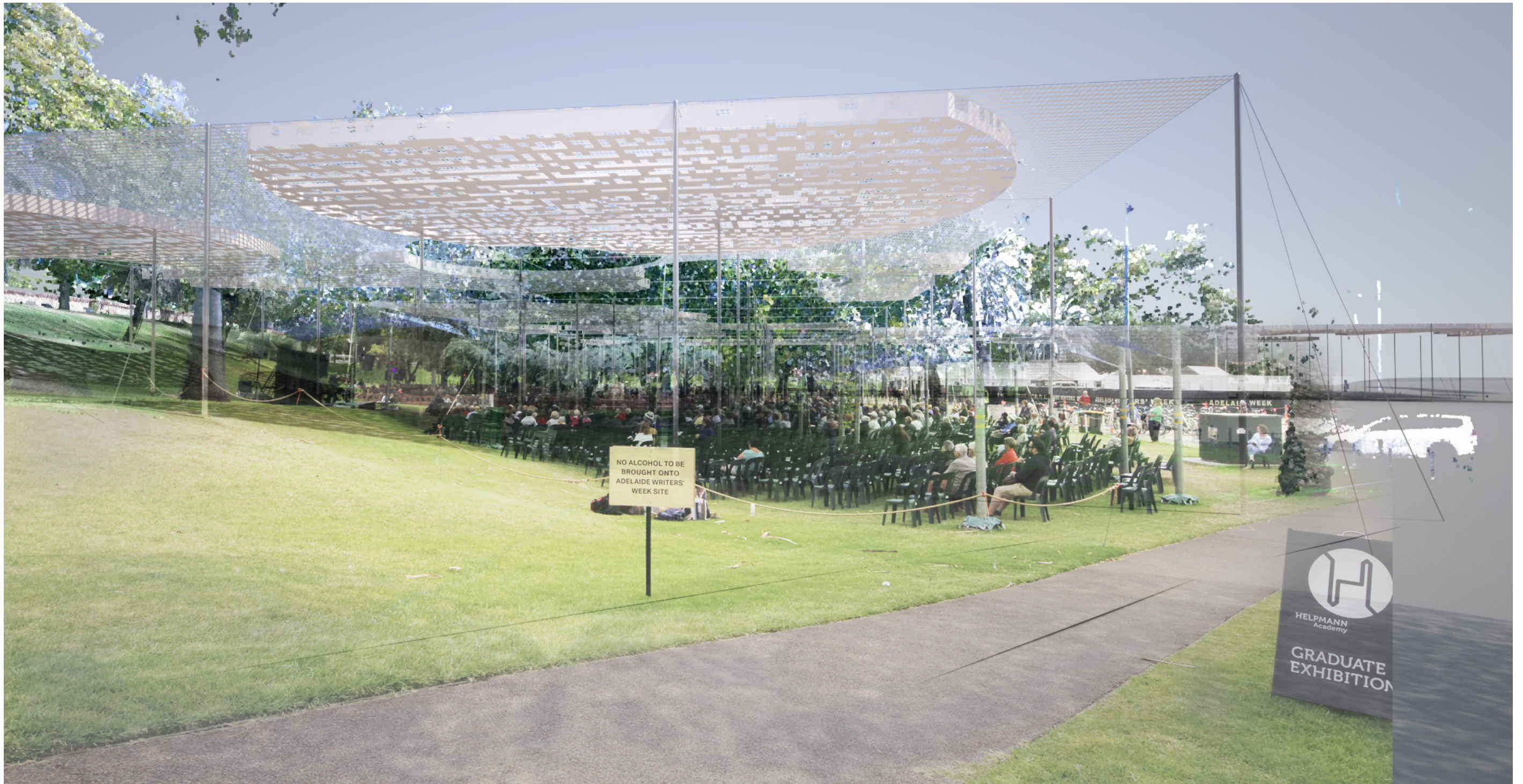


Supporting the fluid expansion of events and audiences.



# venues – presence

SABE *ARM*



Shade and signage - signifying writers week beyond the immediate event.



# shade - complementing existing trees

SABE *ARM*

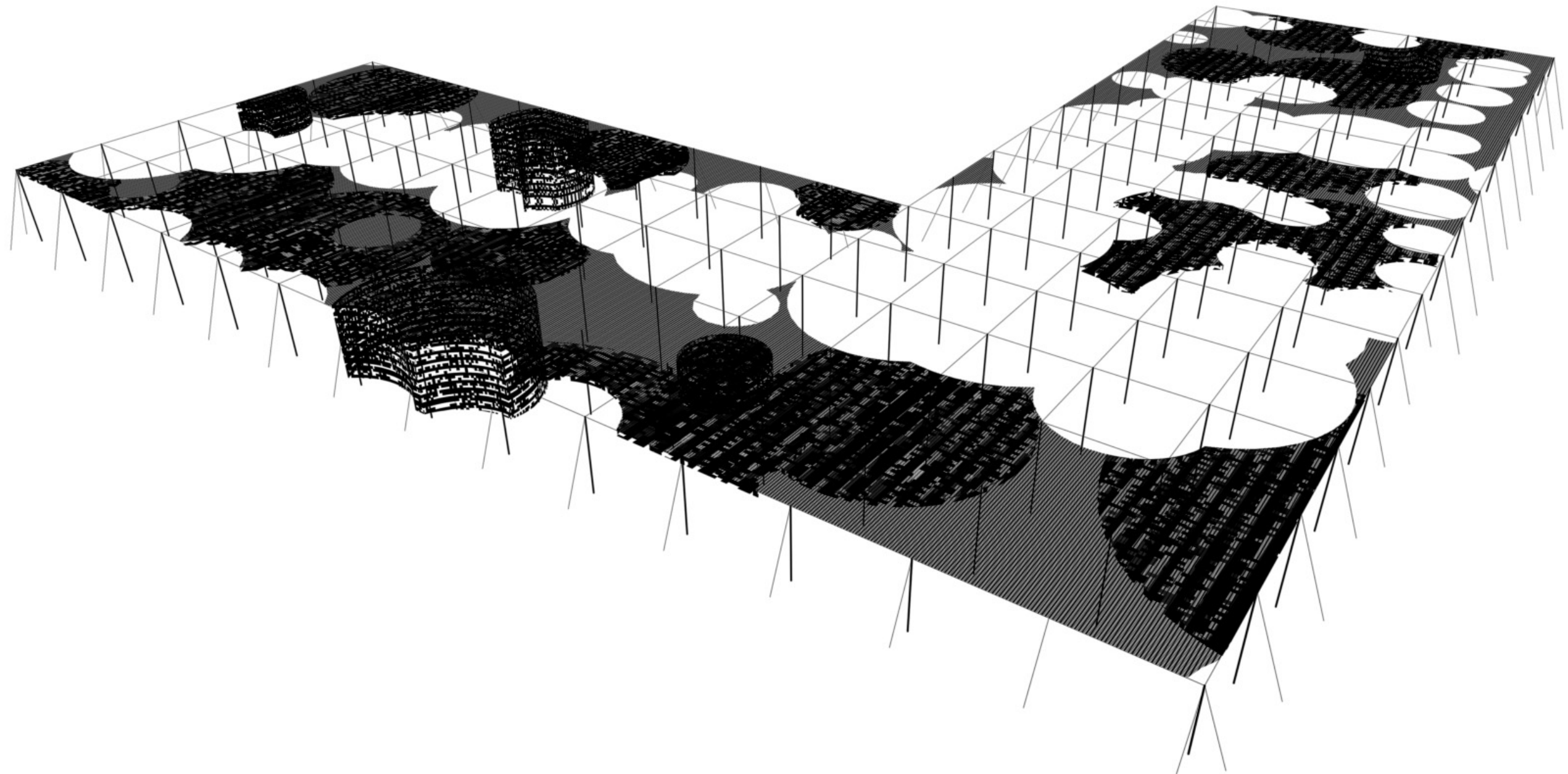


Emulating the existing natural shading.



**size - 125 modules: 10 x 10m**

**SABE *ARM***

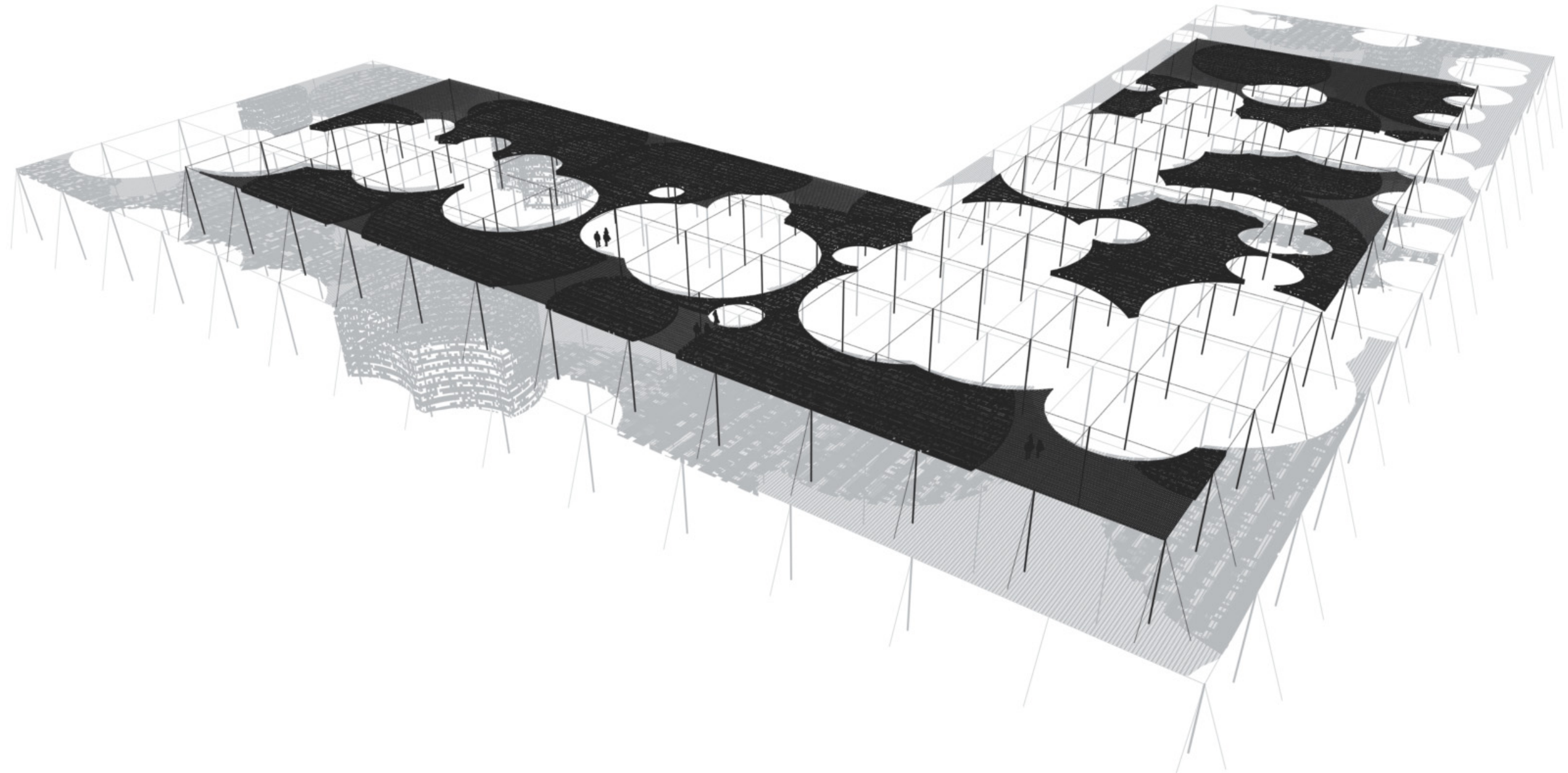


150 x 50m



**size - 80 modules: 10 x 10m**

**SABE ARM**

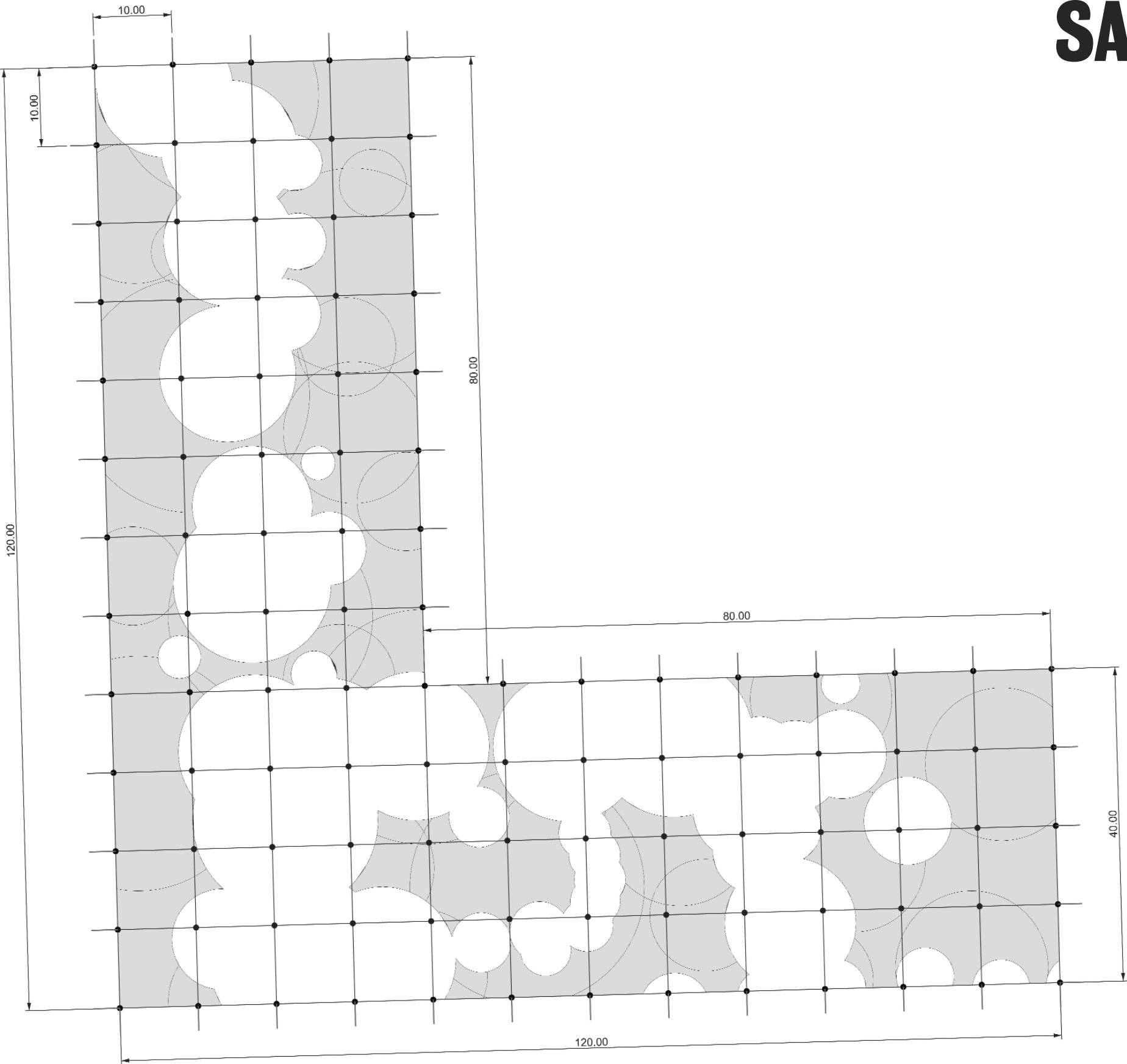


120 x 40m



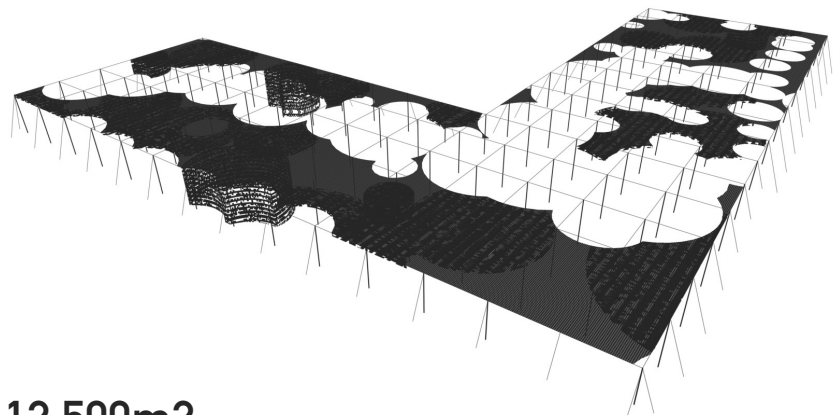
plan

SABE ARM

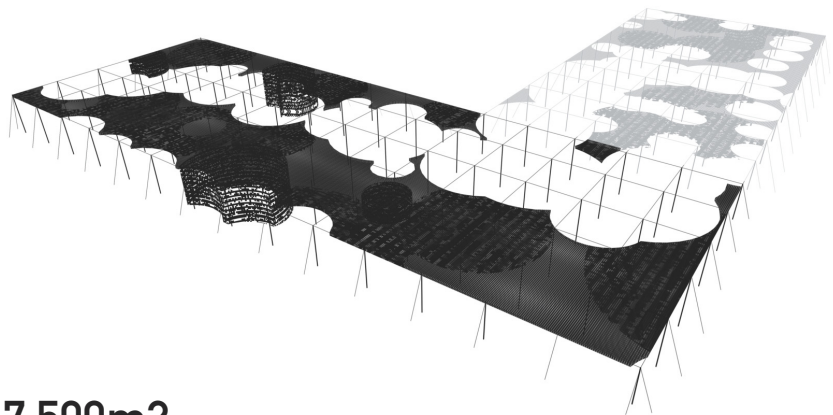




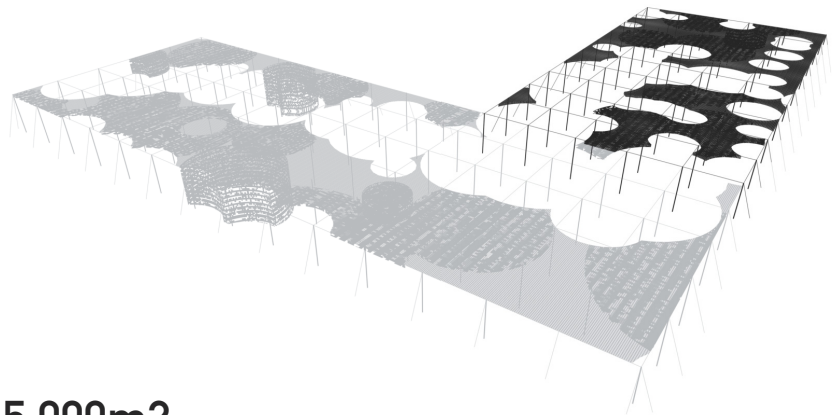
variations - size



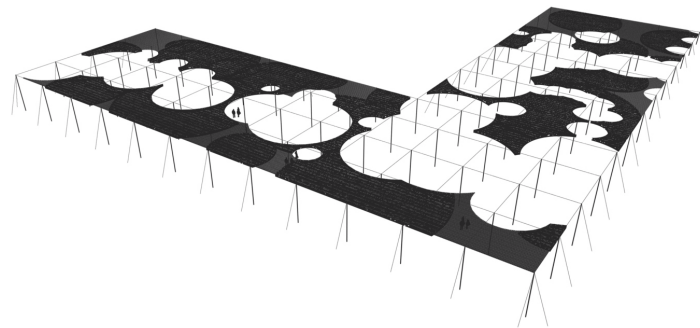
12,500m2



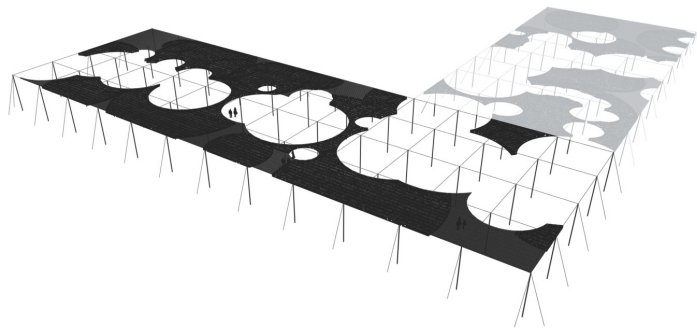
7,500m2



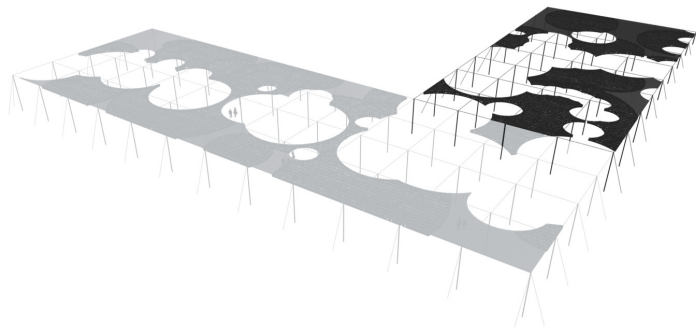
5,000m2



8,000m2



4,800m2



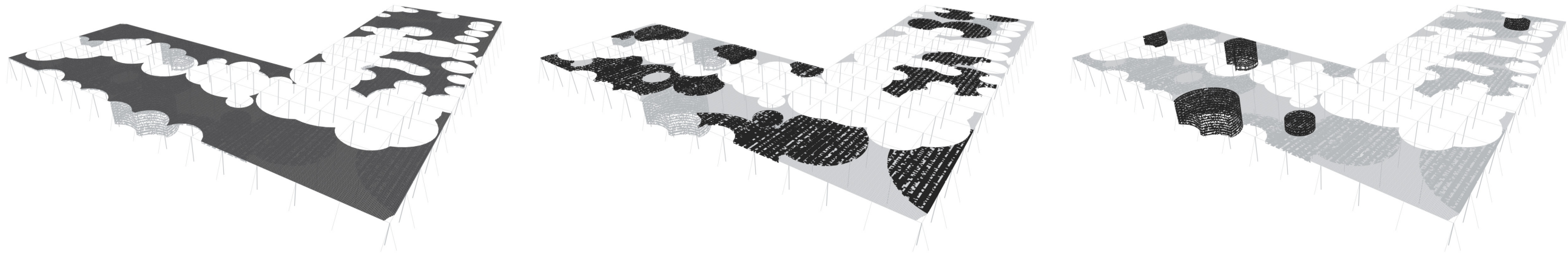
3,200m2

different size footprints



# variations - fit outs

**SABE** *ARM*

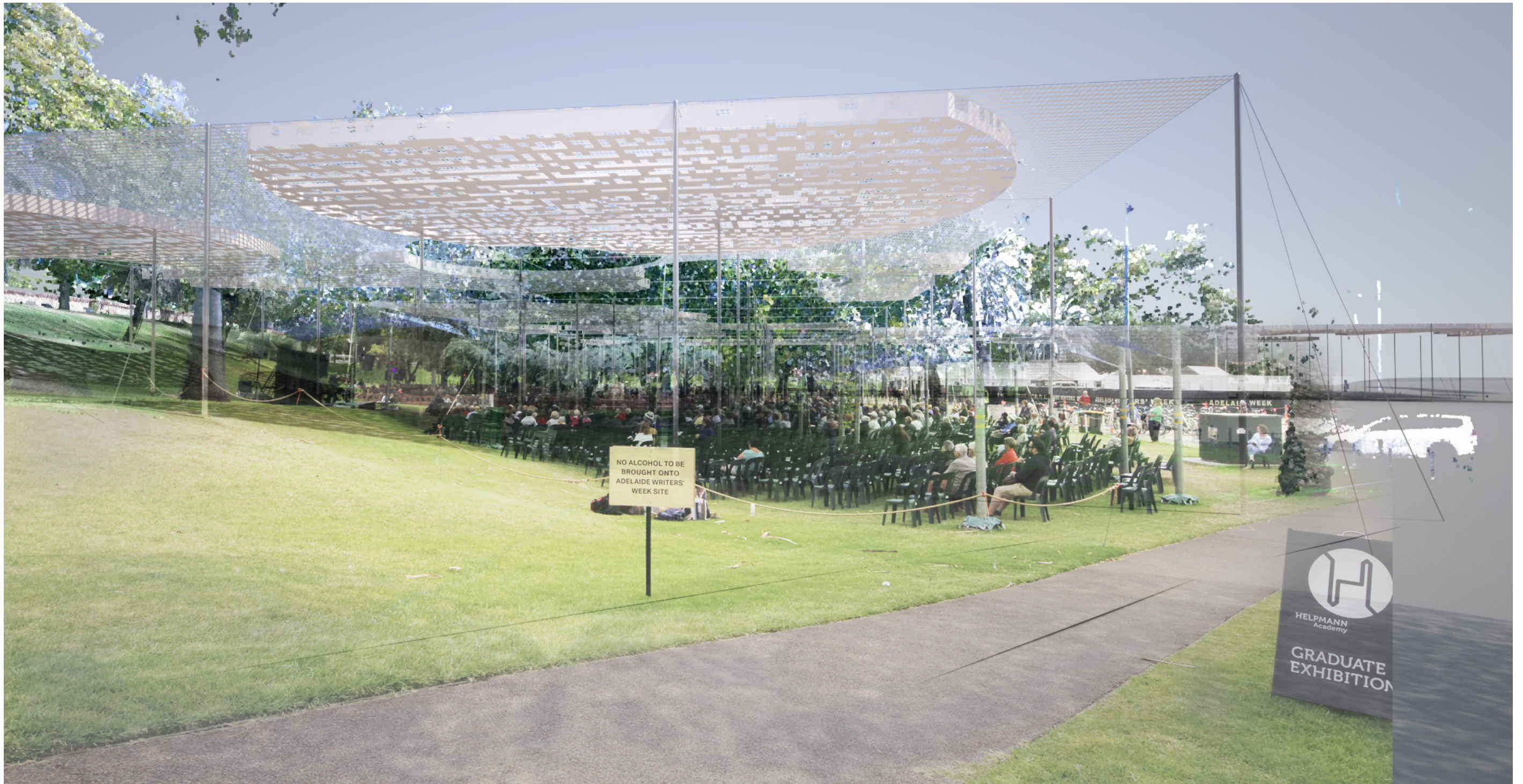


base veil - extra shading - folies / tents



# nexts steps

SABE *ARM*



Invest in structural feasibility study to inform design details, procurement and cost.



# Thanks

**SABE** **ARM**

Dr Urs Bette  
School of Architecture and Built Environment  
The University of Adelaide SA 5005 Australia  
P: 0430 305 665  
E: [urs.bette@adelaide.edu.au](mailto:urs.bette@adelaide.edu.au)

Philippe Naudin  
ARM architecture  
Level 1 / 5 Peel Street, Adelaide SA 5000  
P: 08 8423 6081  
E: [pnaudin@armarchitecture.com.au](mailto:pnaudin@armarchitecture.com.au)